










ROLLERGATE

The Vortex Roller Gate is the best choice for handling dry material in gravity flow applications. This gate is available in a wide variety of configurations including rectangular sizes and customer specific hole patterns. It has live-loaded seals that extend service life by compensating for wear. These seals provide an excellent material seal across the gate and to atmosphere. They can also be replaced while the valve is in-line.

- GRAVITY FLOW**
- DILUTE PHASE PNEUMATIC CONVEYING** (Pressure or Vacuum)
- DENSE PHASE PNEUMATIC CONVEYING**

FEATURES

-  Handles powders, granules and pellets
-  Positive seal of dust and fine powders
-  Wear compensating hard polymer seals
-  Serviceable while in-line
-  Seal access ports for seal replacement while valve is in-line
-  Accurate metering of material with optional controls
-  No pinch points or exposed moving parts for safe operation
-  Material construction options available
-  Standard sizes: 4" - 30"
Contact us for custom sizes

OPTIONS



SINGLE CYLINDER



DUAL CYLINDER

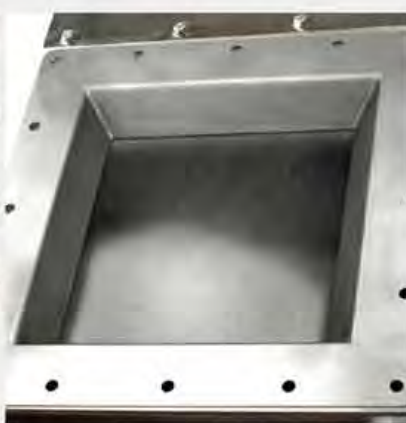


RECTANGULAR

DETAILS



The bonnet seals can be replaced while in-line to decrease downtime



A special service inlet can be added to deflect material away from seals and rollers to reduce wear



Top blade seal & cam adjustable rollers supply smooth linear actuation and in-line adjustments

APPLICATIONS



13" (330mm) Roller Gate below a screw conveyor



6" (152mm) Roller Gate below hopper handling flour



26" (660mm) Dual Cylinder Roller Gate

For a complete list of specifications, modifications, dimensional drawings and measurements, visit WWW.VORTEXVALVES.COM