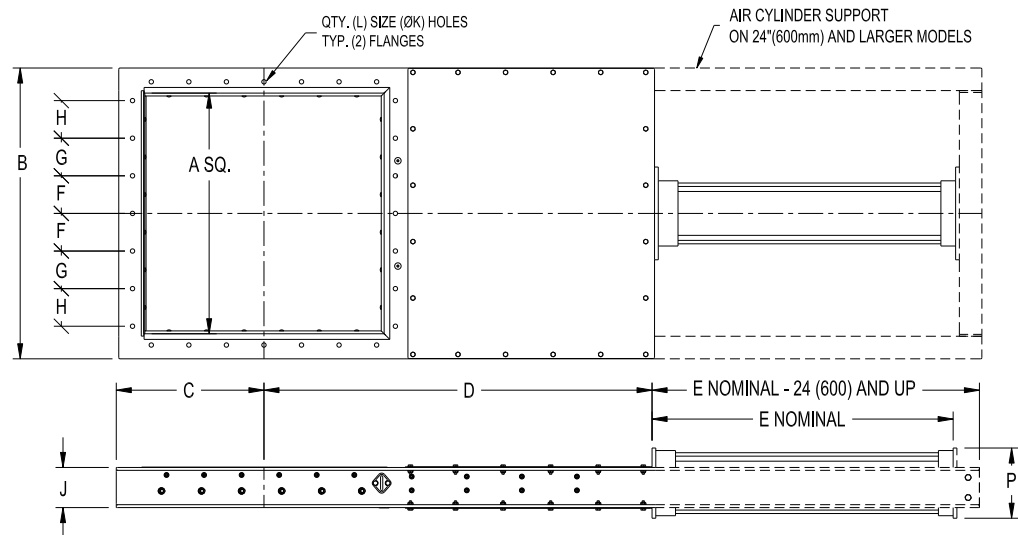


Standard Assembly Unit Installation Data:

- Designed for dry material in gravity flow applications.
- **Actuation:** Double acting air cylinder. The air cylinder requires a minimum of 80 psig (5.4 bar), filtered, compressed air for most reliable service. Air lubrication is not required but is recommended for extended wear life. Magnetic piston included. Extending the air cylinder closes the gate.
- **Temperature:** Base model rated at 180° f (82° c) continuous service, 200° f (93° c) intermittent (10 minutes maximum).
- **Air Control:** A 2 position, 4 way lever or solenoid operated compressed air control is required to operate the air cylinder. Sizes 4-13 (100-325) require air controls with at least 1.4 cv (1.2 kv). Sizes 14-22 (350-550) require at least 2.6 cv (2.2 kv). Sizes 24-30 (600-750) require at least 3.0 cv (4.3 kv).
- **Tighten flange bolts to partially compress gaskets!**
- **Hardware:** Imperial models contain imperial hardware & metric models contain metric hardware.



Model	A		B		C		D		E		F		G**		H**		J		K		L Qty	P		Air Usage 1		WEIGHT	
	in	mm	in	mm	in	mm	in	mm	in	mm	in	mm	in	mm	in	mm	in	mm	in	mm		in	mm	SCF	I	Lbs	Kg
SA04V1 (SA100V1)	4	102	8	203	4	102	9 5/8	244	8 7/8	225	3 1/8	79	-	-	-	-	3	76	7/16	11	8	4 1/8	105	0.14	4.0	21	10
SA05V1 (SA125V1)	5	127	9	229	4 1/2	114	10 1/2	267	9 7/8	251	3 5/8	92	-	-	-	-	3	76	7/16	11	8	4 1/8	105	0.3	8.5	28	13
SA06V1 (SA150V1)	6	152	10	254	5	127	12	305	10 7/8	276	4 1/8	105	-	-	-	-	3	76	7/16	11	8	5 1/8	130	0.36	10.2	31	14
SA07V1 (SA175V1)	7	178	11	279	5 1/2	140	13 1/2	343	11 7/8	302	3	76	2 13/16	71	-	-	3	76	7/16	11	12	5 1/8	130	0.42	12.0	34	15
SA08V1 (SA200V1)	8	203	12	305	6	152	15	381	12 7/8	327	3 1/2	89	-	-	-	-	3	76	7/16	11	12	5 1/8	130	0.48	13.7	37	17
SA09TV1 (SA225TV1)	9	229	13	330	6 1/2	165	16 1/2	419	13 7/8	352	4 1/8	105	3 3/8	86	-	-	3	76	7/16	11	10	5 1/8	130	0.54	15.4	42	19
SA09V1 (SA225V1)	10	254	14	356	7	178	18	457	14 7/8	378	4	102	-	-	-	-	3	76	7/16	11	12	5 1/8	130	0.6	17.1	45	20
SA10V1 (SA250V1)	10	254	14	356	7	178	18	457	14 7/8	378	4 1/2	114	-	-	-	-	3	76	4/9	11	12	5 1/8	130	0.6	17.1	45	20
SA11V1 (SA275V1)	11	279	15	381	7 1/2	191	19 1/2	495	15 7/8	403	4 3/8	111	4 5/16	110	-	-	3	76	4/9	11	12	5 1/8	130	0.66	18.8	49	22
SA12V1 (SA300V1)	12	305	16	406	8	203	21	533	16 7/8	429	2 3/4	70	-	-	-	-	3	76	4/9	11	20	5 1/8	130	0.73	20.5	54	25
SA13V1 (SA325V1)	13	330	17	432	8 1/2	216	22 1/2	572	17 7/8	454	5 1/4	133	5 1/8	130	-	-	3	76	4/9	11	12	5 1/8	130	0.79	22.2	57	26
SA14V1 (SA350V1)	14	356	18	457	9	229	24	610	18 7/8	479	3 1/4	83	-	-	-	-	3	76	4/9	11	20	5 1/8	130	0.85	24.0	61	28
SA15V1 (SA375V1)	15	381	19	483	9 1/2	241	25 1/2	648	19 7/8	505	3 1/2	89	-	-	-	-	3	76	4/9	11	20	5 1/8	130	0.91	25.6	69	31
SA16V1 (SA400V1)	16	406	20	508	10	254	27	686	21 1/8	537	3 3/4	95	-	-	-	-	3	76	4/9	11	20	5 1/2	140	1.18	33.3	76	35
SA17V1 (SA425V1)	17	432	21	533	10 1/2	267	28 1/2	724	22 1/8	562	4	102	4	102	3 3/4	95	3	76	4/9	11	20	5 1/2	140	1.25	35.4	81	37
SA18V1 (SA450V1)	18	457	22	559	11	279	30	762	23 1/8	587	4 1/4	108	-	-	-	-	3	76	4/9	11	20	5 1/2	140	1.32	37.5	86	39
SA19V1 (SA475V1)	19	483	23	584	11 1/2	292	31 1/2	800	24 1/8	613	4 3/8	111	4 3/8	111	4 7/16	113	3	76	5/9	14	20	5 1/2	140	1.4	39.5	91	41
SA20V1 (SA500V1)	20	508	24	610	12	305	33	838	25 1/8	638	3	76	-	-	-	-	3	76	4/9	11	28	5 1/2	140	1.47	41.6	102	46
SA21V1 (SA525V1)	21	533	25	635	12 1/2	318	34 1/2	876	26 1/8	664	4 3/4	121	4 3/4	121	4 7/8	124	3	76	5/9	14	20	5 1/2	140	1.54	43.7	108	49
SA22V1 (SA550V1)	22	559	26	660	13	330	36	914	27 1/8	689	3 1/2	89	-	-	-	-	3	76	4/9	11	28	5 1/2	140	1.62	45.8	114	52
SA24V1 (SA600V1)	24	610	29	737	14 1/2	368	39	991	32 5/8	829	3 3/4	95	-	-	-	-	4	102	4/9	11	28	6 1/2	165	2.52	71.3	180	82
SA25V1 (SA625V1)	25	635	30	762	15	381	40 1/2	1029	33 5/8	854	5 1/2	140	5 5/8	143	5 5/8	143	4	102	5/9	14	20	6 1/2	165	2.63	74.3	188	85
SA26V1 (SA650V1)	26	660	31	787	15 1/2	394	42	1067	34 5/8	879	4 1/8	105	-	-	-	-	4	102	4/9	11	28	6 1/2	165	2.73	77.3	196	89
SA27V1 (SA675V1)	27	686	32	813	16	406	43 1/2	1105	35 5/8	905	4 1/4	108	-	-	-	-	4	102	4/9	11	28	6 1/2	165	2.84	80.3	205	93
SA28V1 (SA700V1)	28	711	33	838	16 1/2	419	45	1143	36 5/8	930	4 1/4	108	-	-	-	-	4	102	4/9	11	28	6 1/2	165	2.94	83.2	214	97
SA30V1 (SA750V1)	30	762	35	889	17 1/2	445	48	1219	38 5/8	981	3 5/8	92	-	-	-	-	4	102	4/9	11	36	6 1/2	165	3.15	89.2	233	106

* DASHES IN THESE COLUMNS INDICATE THAT BOLT HOLE SPACING IS THE "F" DIMENSION FOR THE ENTIRE BOLT HOLE PATTERN.

*Information subject to change without notice | Above information is Vortex standard dimensional information | Contact us if your application needs a non-standard valve | Available specifications and modifications available at www.vortexvalves.com

